

NOTES

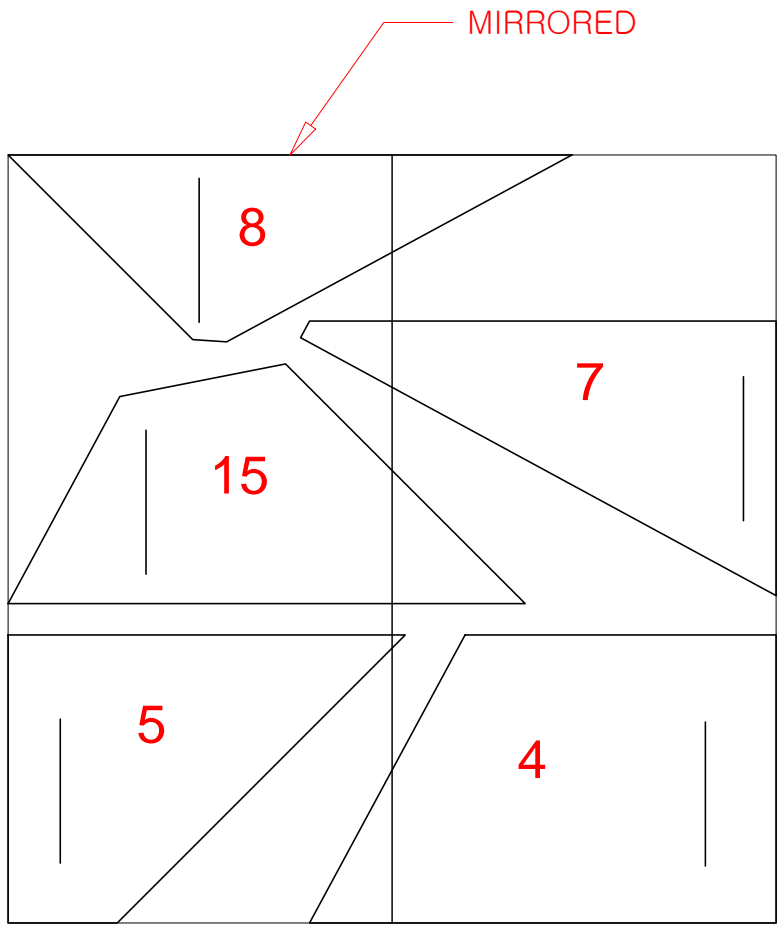
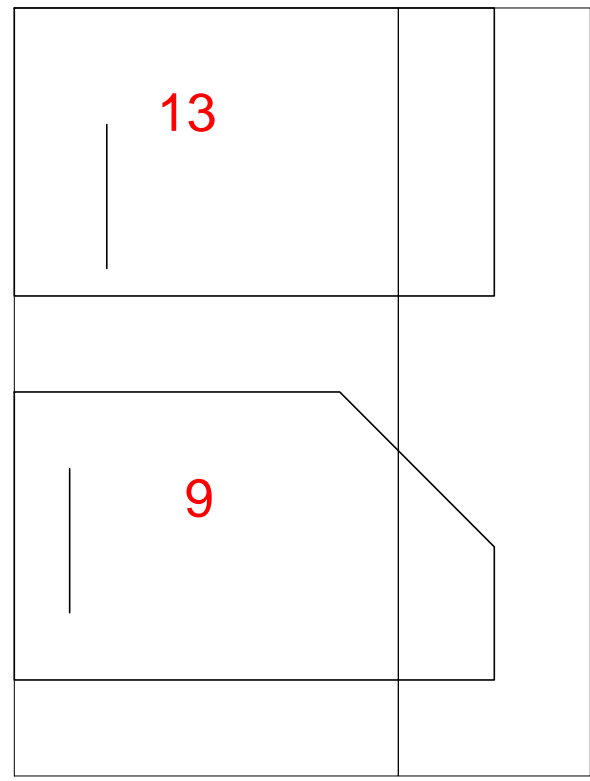
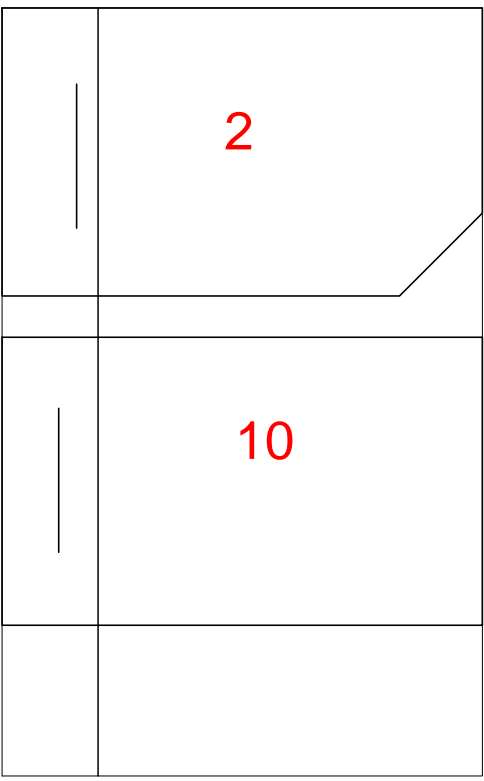
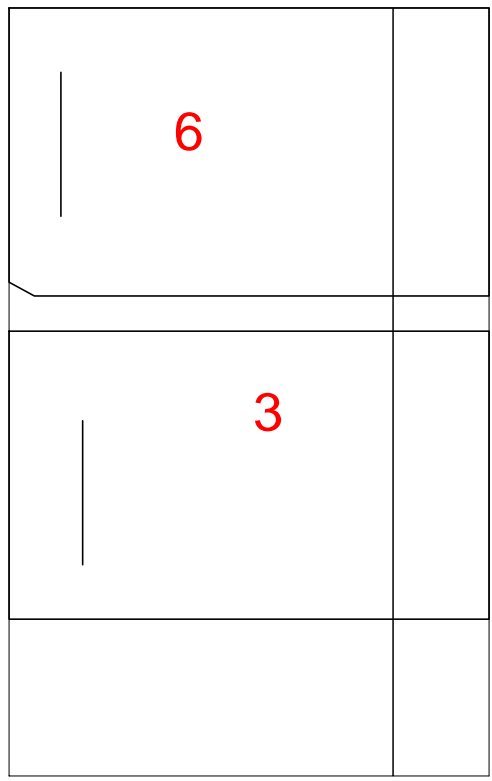
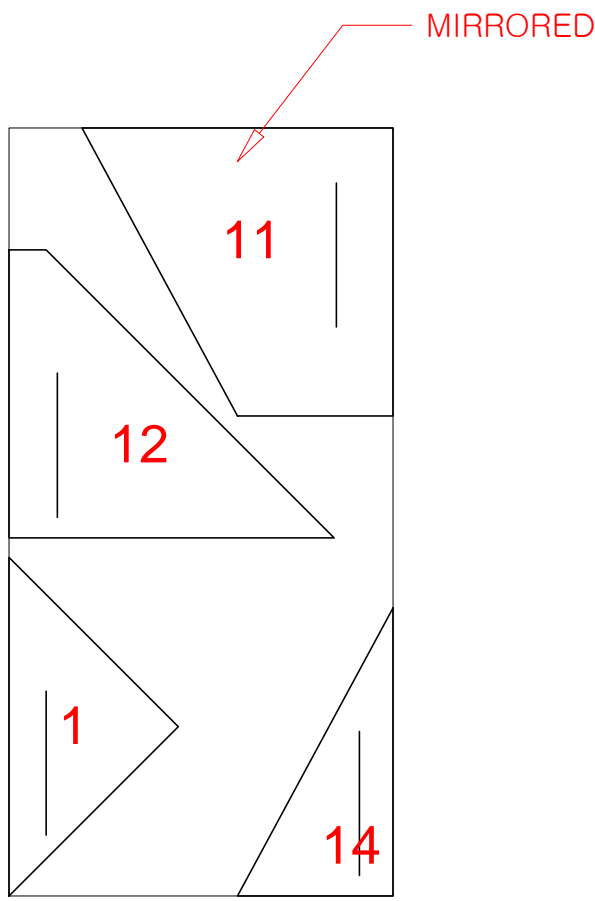
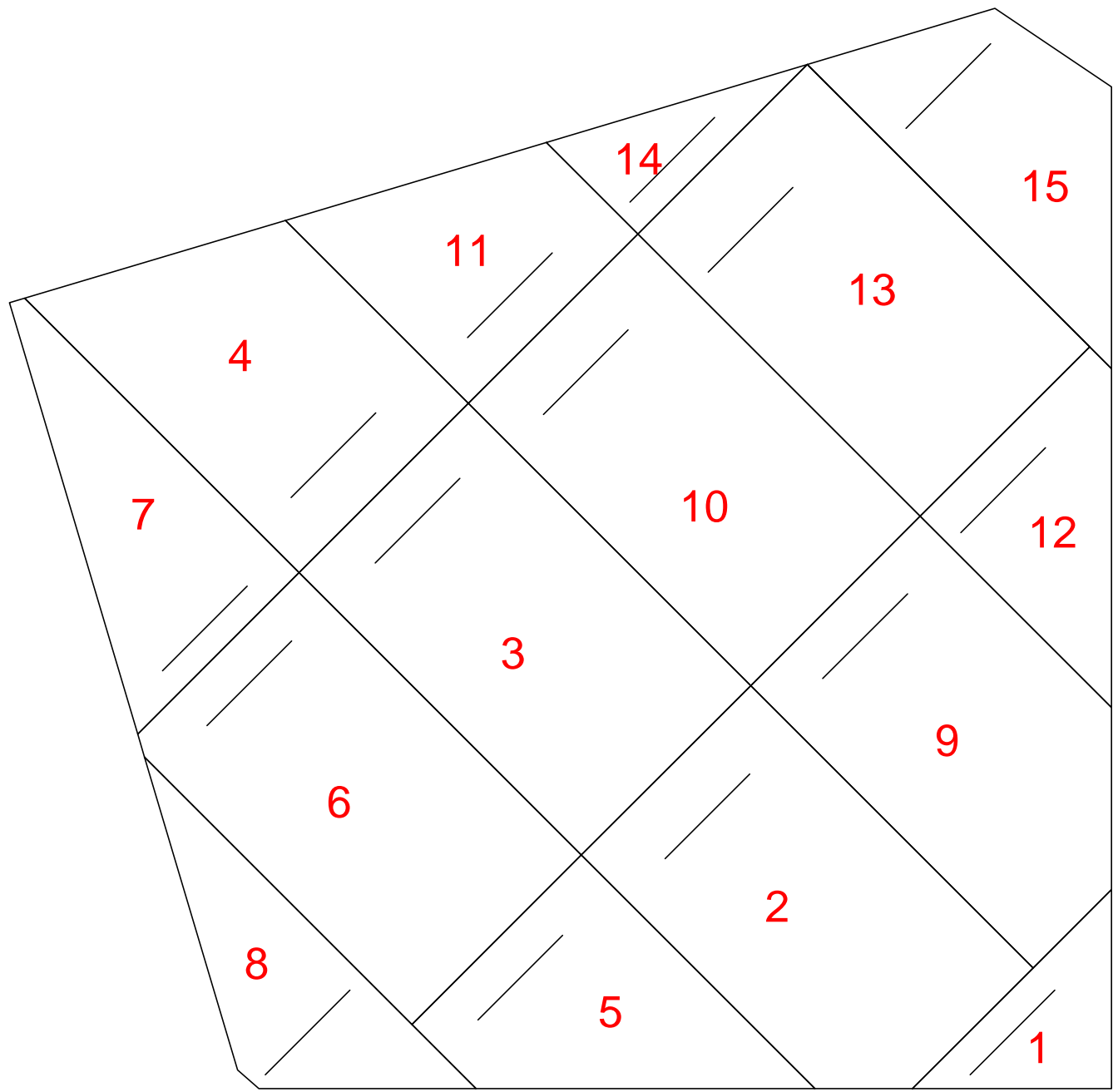
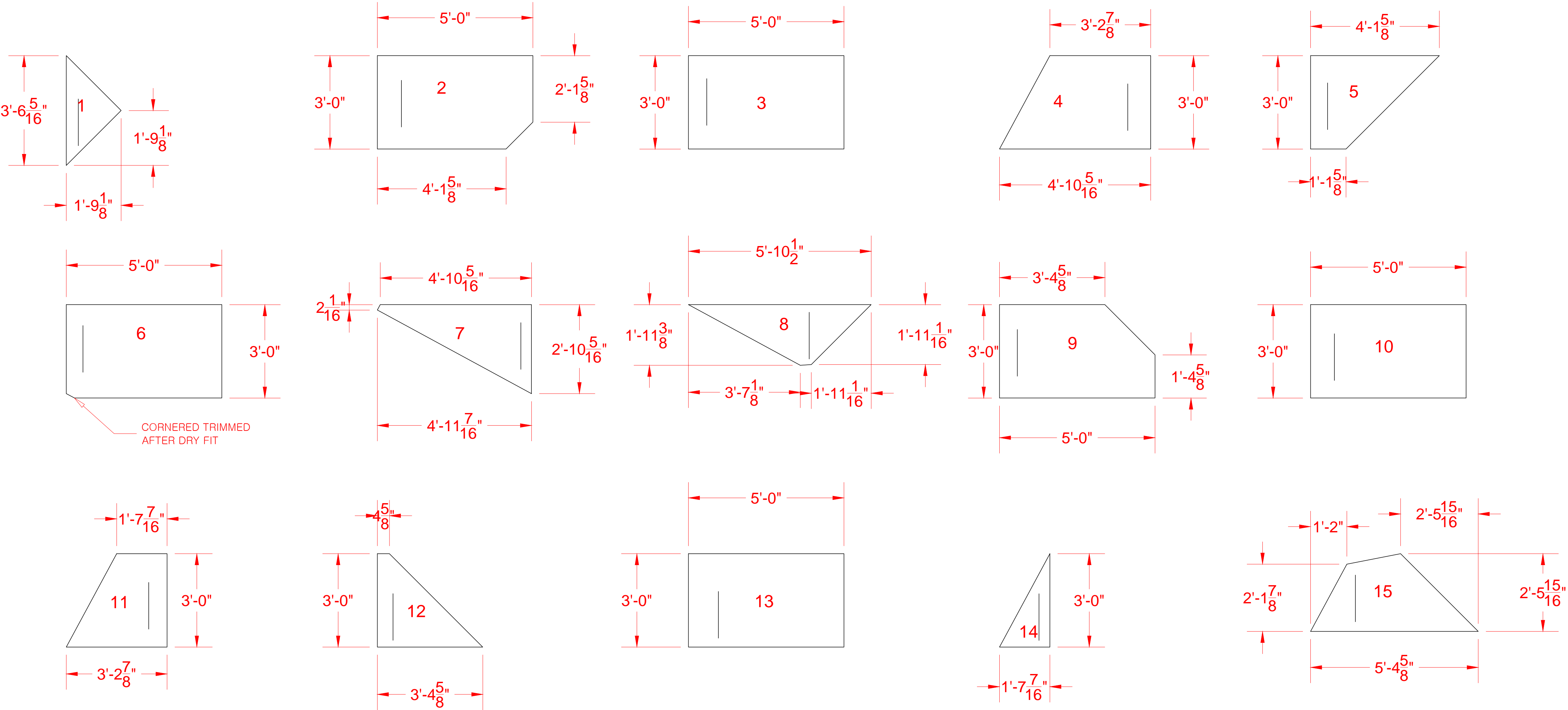
ALL LIDS CUT FROM
3/4 " PLYWOOD

FRAMED WITH 2X4 ON
FACE
PERPENDICULAR TO
GRAIN WITH
MAXIMUM OF 24"
BETWEEN THEM

PIECES WILL JOIN
WITH COFFIN LOCKS

WHOLE FLOOR IS
PLANKED WITH
STRIPS OF 1/4" BIRCH
PLYWOOD TO BE
ADDED AFTER DRY
FIT

FLOOR HAS A RAMP
SURROUND,
DETAILED ON PAGE 3



SUGGESTED PLYWOOD LAYOUT

USITT		DWG. PLATE 2
PQ 15 USA Student Exhibit		
DECK PLYWOOD LAYOUT		
Director: Markéta Trösterová-Fantová	Technical Director: Sandy Everett	
Designer: PQ 2015 Student Designers	Drafter: Sandy Everett	
DATE PRINTED: 1/12/2015	SCALE: 1/2" = 1'-0" & AS NOTED	